



UIC's Outpatient Care Center

Inside this issue:

<i>Suzann Campbell Retires</i>	2
<i>Research at UIC</i>	2
<i>Class of 2008 Awardees</i>	2
<i>Research Opportunity</i>	3
<i>Electronic CPI</i>	3
<i>CI credentialing Courses</i>	4

Student Supervision, Medicare and Illinois Practice Act

Student supervision within the clinic continues to be a topic of much discussion, especially when Medicare is involved. How do you determine if your supervision is legal and not fraudulent?

Within the State of Illinois, student physical therapists (SPT) and student physical therapist assistants (SPTA) are required to have “on-site supervision of a licensed Physical Therapist”¹. The State Practice Act further clarifies this by stating, “the physical therapist shall be readily available for direct supervision and instruction to insure the safety and welfare of the patient”¹.

Therefore in order to practice legally, the clinical instructor for the SPT and the SPTA must be a PT and be readily available for students.

Medicare dictates the level of supervision a student must have related to reimbursement. If you would like to bill Medicare for the services provided, you must follow their rules. Under Medicare A for the inpatient hospital care, there currently are not any specific guidelines for student supervision. APTA recommends that state law and Medicare A for the SNF be guidelines for clinical instructors to follow.

Medicare A for SNF states that student minutes can count toward the minimum data set as long as a licensed physical therapist provides line-of-sight supervision².

Medicare B guidelines for student supervision tends to provoke the most questions. In Program Memorandum AB-01-56 from April 2001, CMS states that SPTs and SPTAs do not meet the definition of practitioners listed in the statute, therefore services provided by students are not reimbursed under Medicare.³ Medicare Transmittal 1753 in May 2002 states that “Therapists may bill and be paid for the provision of services in the following scenarios:

- The qualified practitioner is present and in the room for the entire session. The student participates in the delivery of services when the qualified practitioner is directing the service, making the skilled judgment, and is responsible for the assessment and treatment.
- The qualified practitioner is present in the room guiding the student in service delivery when the therapy student and the therapy assistant student

are participating in the provision of services, and the practitioner is not engaged in treating another patient or doing other tasks at the same time.”⁴

Based on this statement, if the above conditions are met, the time a student spends with a Medicare B patient can be billed to Medicare. It is facility dependent as to how to form policies related to these guidelines. For educational strategies related to students and Medicare Part B, see APTA website “Student Services and Medicare Reimbursement”

Hopefully this has helped to clarify some of the areas of confusion related to student supervision.

References:

¹Illinois State Practice Act found at <http://ilga.gov/legislation/ilcs/ilcs3.asp>

²APTA student supervision chart found at www.apta.org/AM/Template.cfm?section=student_aids_students

³CMS Transmittal AB-01-56 found at www.cms.hhs.gov/

⁴Medicare Transmittal 1753 found at www.cms.hhs.gov/



Suzann Campbell Retires



Suzann K Campbell, PT, PhD, FAPTA, Professor and Department Head, retired in May, 2008. At UIC since 1987, she has vigorously pursued her research interests: assessment of high-risk infants and early intervention to promote locomotion in infants with white matter injury while also mentoring countless students and faculty.

We still find her at UIC from time to time as her research continues, including nationwide data collection for her project, investigating a new approach to intervention for children with perinatal white matter injury. And you may see her in the clinic working towards her Early Intervention Credential. We miss her, her contributions to the leadership of the Department and her advocacy for Physical Therapy and UIC.

To read more about her many accomplishments, please go to the UIC PT Department website:

<http://www.abs.nic.edu/abs/php/content.php?type=7&id=6>

Research at UIC

We continue to seek support and to progress the scientific knowledge of our field

UIC's Department of Physical Therapy has an ongoing commitment to scholarly advancements in the field, with faculty securing grant funding of over \$1,800,000, producing 21 publications, and 37 presentations/workshops in 2007. Overall, faculty are currently involved in research funded at over six million dollars over the life of the grants.

Funding from sources such as the National Institute of Health, the Arthritis Foundation, and the National Multiple Sclerosis Society, to name a few, help us to add to the literature in scholarly journals. Recent publications have appeared in *Physical Therapy*, *Stroke*, and *American Journal of Physiology: Heart and Circulatory Physiology*, journals that help disseminate the latest findings and inform both researchers and clinicians.

We continue to seek support and to progress the scientific knowledge of our field.

Class of 2008 Graduated May 8

And, we miss them! At the May 7 Pinning Ceremony, UIC applauded the Class of 2008 and recognized outstanding contributions of students, clinical and academic faculty.

Kudos to Sharrone Moustakis, DPT, University of Illinois Medical Center who received the S K Campbell Award for Excellence in Clinical Teaching and Don Straube, PT, MS, NCS who received the Excalibur Award for Teaching Excellence in the College of Applied Health Sciences.

We are pleased to note the following Class of 2008 award winners:

The PT Department 2008 Achievement Award and Outstanding Clinical Experience Award – Michelle Nemec, DPT.

Outstanding Case Report — Andrea LaCoy, DPT.

Highest Grade Point Average Award — Jason Sweas, DPT and Andrea LaCoy, DPT.



CCCE / CI Research Opportunity

Would you like to participate in a research project, Identification of the PT-Specific Professional Abilities for the 21st Century? This study revisits the Physical Therapy Specific Generic Abilities, initially identified in 1991 by the faculty of the University of Wisconsin-Madison, Physical Therapy Educational Program. Since the initial study was conducted, Physical Therapy and professional education have changed significantly. Today's physical therapists function more autonomously which places a higher demand for professionalism on the new graduates.

The new study will build on the work of other researchers in analyzing the PT-Specific Professional Abilities with regard to changes in physical therapy and the generational differences of the "Millennial" or "Y" Generation (born 1980-2000). These are the graduates of the classes of 2004 and beyond who will shape clinical practice in the 21st century.

The research team of Warren May, PT, MPH, Laurie Kontney PT, DPT, MS, Z. Annette Iglarsh, PT, PhD, MBA will conduct this project.

The study will be conducted as on-line survey which will take about 15 minutes, 3 to 4 times. Participants will be asked to add to or delete from the original list of Generic Abilities. Participating Center Coordinators of Clinical Education (CCCE's) and Clinical Instructors (CI's) will determine the list of the PT-Specific Professional Abilities they expect of the newly licensed physical therapist upon employment in their facilities and rank the importance of these professional abilities.

The on-line survey will refer to the following PT Specific Abilities: Commitment to Learning, Interpersonal Skills, Communication Skills, Effective Use of Time and Resources, Use of Constructive Feedback, Problem Solving, Professionalism, Responsibility, Critical Thinking and Stress Management.

For more information about this project and how to become a participant, please contact:

Warren W. May, PT, MPH

May & Associates Consulting

6 Summerhill St.,

Stoneham, MA 02180-1926

Phone/Fax 781.279.0084

Cell 781.883.5024

foordmay@comcast.net

Electronic Clinical Performance Instrument

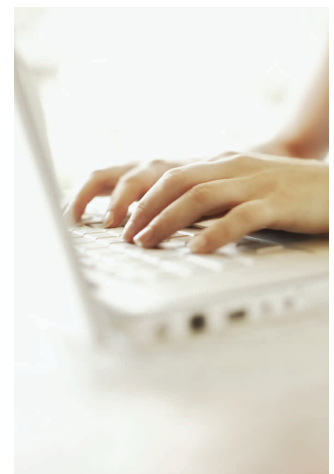
The more condensed electronic version of the Clinical Performance Instrument (CPI) became available for general use by Physical Therapy Programs on July 15, 2008. The new tool is electronic and includes a smaller number of criteria (18).

UIC has decided to begin using the new tool with the Class of 2010, starting May 2009. In order to get everyone into this Web based system, we will be contacting CCCEs this fall for lists of CIs and their email addresses.

This new version of the CPI also has an on-line training component that is completed once (with continuing education credit awarded) prior to having access to the tool.

More information to come in the next newsletter.

**Would you like to
participate in a
research project?**



University of Illinois at Chicago

Clinical Education

Department of Physical Therapy (MC 898)
College of Applied Health Sciences
1919 W. Taylor Street, 4th Floor
Chicago, IL 60612-7251

Jean Rogers, PT, MA, Co-Director of Clinical Education

Tel: 312.996.2073

Email: jeanner@uic.edu

Fax 312.996.4583

Amy Maxeiner, PT, MSED, Co-Director of Clinical Education

Tel: 312.996.1503

Email: maxeiner@uic.edu

<http://www.ahs.uic.edu/pt/>

*John Slavick, MS, Program Coordinator for Doctor of Physical
Therapy Program*

Tel: 312.996.1501

Email: jslavi1@uic.edu



APTA CI Education and Credentialing Courses

APTA CI Credentialing Course: Basic.

Would you like to host the APTA Clinical Instructor Education and Credentialing Program at your site?

Amy Maxeiner is a certified trainer for the basic course and would love to conduct the 2 day course at your facility. Please call me at 312-996-1503 or email at Maxeiner@uic.edu approximately 6 months in advance to start the planning process.

APTA CI Credentialing Course: Advanced.

Did you know that the Chicago Area Clinical Educators Forum is offering the Advanced Clinical Instructor course in November? CACEF will be sponsoring the new advanced course November 14-15, 2008 at Rosiland Franklin University of Medicine and Science. Go to www.CACEF.com and click on the announcement link for registration materials and additional information about the course.